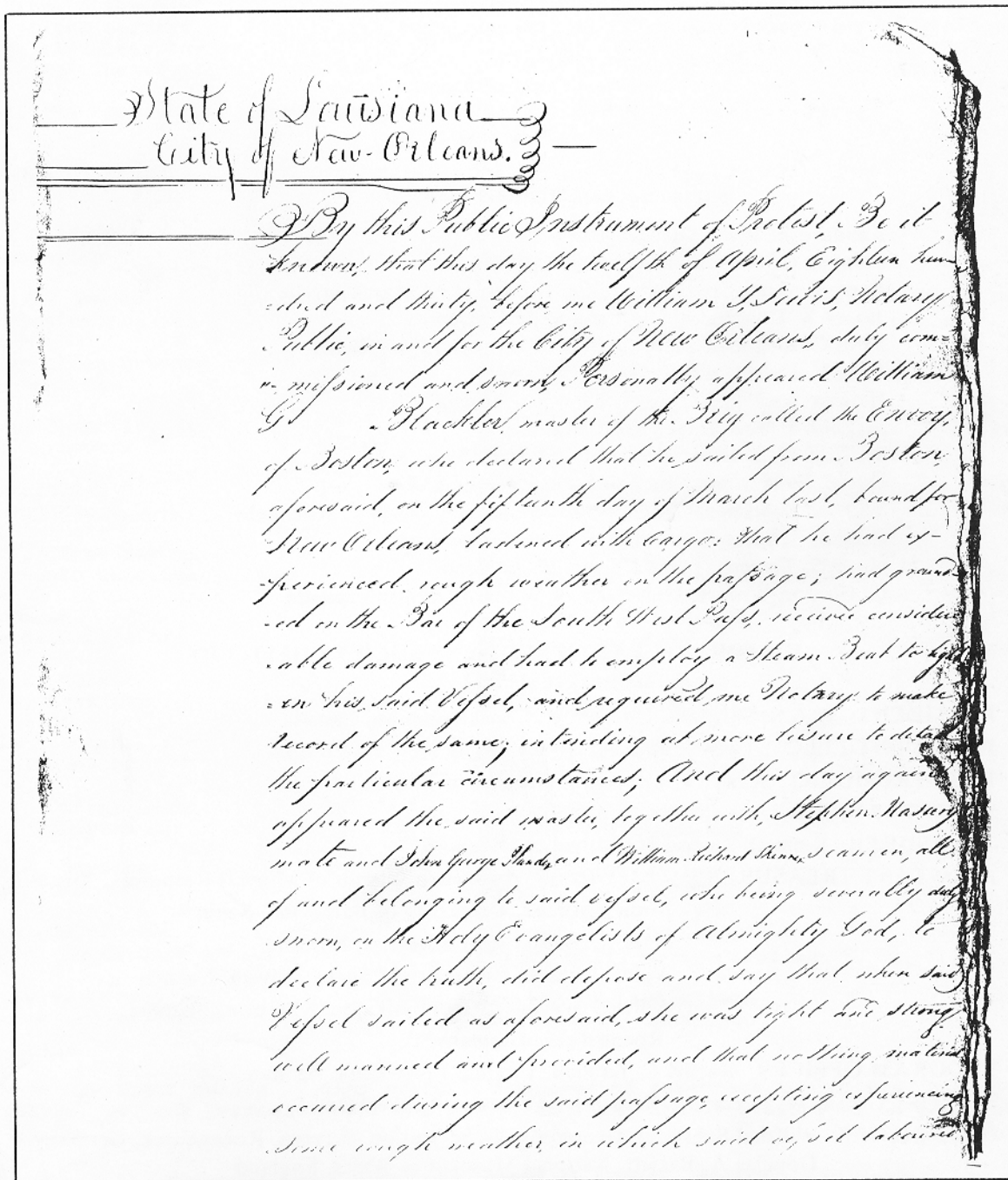


# EARTH SCIENCES HISTORY

JOURNAL OF THE HISTORY  
OF THE EARTH SCIENCES SOCIETY

VOLUME 4, NUMBER 1, 1985



A PUBLIC INSTRUMENT OF PROTEST, MADE BY CAPTAIN WILLIAM G. BLACKLER, MASTER OF THE BRIG ENVOY, DATED APRIL 14, 1830, DETAILING THE PROBLEMS CREATED BY THE WINDS AND THE WAVES UPON ENTERING THE RIVER MISSISSIPPI.

## PREFACE

### HISTORY OF GEOLOGY AND GEOLOGICAL EDUCATION IN THE SOUTHERN AND BORDER STATES

This volume grew out of a symposium presented in the spring of 1983 to the southeastern section of the National Association of Geology Teachers. It complements William M. Jordan's "History of Geology and Geological Concepts in the Northeastern United States," which formed Volume 2, Number 2 of this journal. There were twelve symposium papers (Corgan, GSA Abstracts with Programs, v. 15, 1983). Three authors withdrew their texts during the years between presentation and publication. Before the withdrawals, three reports were added to provide better balance.

While this volume complements other regional issues of this journal, it is unique in many ways. It treats the histories of geology departments in public regional universities; it views state geological surveys as educational agencies; and it presents biographies of geology teachers. This volume ties into the national scene by considering the first director of the USGS, and by examining inter-institutional programs, such as the first summer school of geology.

In editing this volume I had the help of the following critical readers:

Dr. Michele L. Aldrich  
Washington, D.C.

Dr. Daniel D. Arden  
Kenner, Louisiana

Michael B. E. Bograd  
Jackson, Mississippi

Dr. Bradley Allen Branson  
Richmond, Kentucky

Dr. Kenneth G. Brill, Jr.  
St. Louis, Missouri

Dr. S. R. Bruesch  
Memphis, Tennessee

Dr. John R. Carpenter  
Columbia, South Carolina

Dr. John Coash  
Bakersfield, California

Dr. James E. Conkin  
Louisville, Kentucky

Dr. Dennis R. Dean  
Kenosha, Wisconsin

Dr. John S. Doskey  
Clayton, California

Dr. Patsy A. Gerstner  
Cleveland, Ohio

Dr. John W. Harrington  
Spartanburg, South Carolina

Dr. William M. Jordan  
Millersville, Pennsylvania

Dr. James C. Kelly  
Nashville, Tennessee

Dr. William F. Kohland  
Murfreesboro, Tennessee

Dr. P. E. LaMoreaux  
Tuscaloosa, Alabama

Stuart W. Maher  
Louisville, Kentucky

Frederick F. Mellen  
Jackson, Mississippi

Dr. Robert C. Milici  
Charlottesville, Virginia

Dr. Anne Millbrooke  
East Hartford, Connecticut

Prof. Paul L. Rawson  
Monroe, Louisiana

Dr. William D. Romey  
Canton, New York

Dr. John B. Thomison  
Nashville, Tennessee

Dr. George E. Webb  
Cookeville, Tennessee

Dr. Peter W. Whaley  
Murray, Kentucky

Dr. Walter H. Wheeler  
Chapel Hill, North Carolina

Dr. Robert Lake Wilson  
Chattanooga, Tennessee

This twenty-eight person reading staff is composed of seventeen geologists, six historians, two physicians, and one person each from biology, English, and geography. I am thankful for their labor.

James X. Corgan, Editor

## REPORT OF THE SECRETARY FOR 1984

Membership at the close of the year stood at 393, a significant increase over 1982. Of this number, 90 - more than 20% - reside outside the United States. The proportion of these new members grew faster in 1984 than new members from the United States; the Society is international in outlook. Sadly, the Society lost by death T. J. Schopf, G. G. Simpson, and D. L. Smith.

Subscriptions stood at 106, with 27 outside of the United States. During 1984, two issues of the journal were printed and distributed. Hugh Torrens arranged volume 3(1). Part of volume 3(2) was arranged and typed by Daniel Merriam; we are in debt to both for their splendid efforts.

The informal poll of last year indicated that a majority of those who replied, prefer to maintain the status quo on journal and dues. To increase the number of issues or change printing methods will significantly increase costs.

The slate prepared by the 1985 nominating committee, C. C. Albritton, C. M. Nelson, and A. LaRoque was distributed. Suggestions for next year should be sent to the new chairman, C. M. Nelson.

The Society continues in the debt of the Northeastern Science Foundation. Preparation of a membership list is due to the hard work of Ms. C. Worden.

The council has voted to start a Monograph Series, to provide an outlet for longer works at irregular intervals. As with articles, manuscripts will be reviewed before acceptance. However, details of this work will be distributed to the membership.

One national group has asked to organize under the auspices of the Society. If additional national groups are formed, the Council will devise a mechanism to insure appropriate communication between them and the Council.

The Society continues to grow, but the Secretary would be remiss if he did not encourage everyone to seek new members.

Respectfully submitted,

Ellis L. Yochelson

## REPORT OF THE TREASURER FOR 1984

During 1984, cash on hand was reduced by \$2349.16. Although this is a sad fact to relate, there are several explanations. First, donations were far lower. Again, however, there is a silver lining. If the amount donated to the White issue is deducted from 1983 donations, they are lower than those in 1984. Donations are important to the health of the Society. The Society is in the debt of C. Albritton; M. Aldrich; J. Armostong; D. Baker; S. Bhattacharji; K. Bork; P. Bretsky; G. Cohee; B. Elchison; D. Eby; J. Ferguson; B. Frey; C. Frondel; R. Ginsberg; G. Goodwin; G. Harlow; F. Holland; J. Inners; A. Leviton; J. Lloyd; K. Mark; G. Melickian; S. Newcomb; T. Osberg; K. Pearson; N. Pierce; N. Potter; R. Schrock; M. Siegrist; B. Skinner; J. Street; K. Tinkler; P. Tasch; W. Wheeler; M. Weiss; Mr. & Ms. Anonymous. The Treasurer begs forgiveness for those omitted. Excitement in this field was generated when two members were billed a second time. Both responded by pointing out that they had paid when billed, and had made a donation, but were making a second donation towards getting the records of the Society straightened out! The Society also received a modest matching grant from the Atlantic Richfield Foundation. Members in industry are urged to look for matching grant programs.

The second source of financial drain was a major cost of typing the journal. However, this must be faced up to. For the journal to have uniformity, a special editor must be willing to donate the time of typing the issue or the Society must prepare camera ready copy. Dr. D. Merriam, Wichita State University, aided materially with much of volume 3(2).

It is evident that from dues and subscriptions, the Society can afford to publish two issues annually of about 80-90 pages each. Even this is based on the assumption that the number of members and library subscriptions will increase slightly in 1985.

The financial picture is not rosy, but likewise it is not gloomy. After three years we are still solvent. I thank the membership for its support and with considerable relief turn the job of Treasurer over to Kenneth Taylor.

Respectfully submitted,

Ellis L. Yochelson

Cover: Document relating to historical aspects of modern geological setting from the Collection on History of Geology, Northeastern Science Foundation, Inc., Rensselaer Center of Applied Geology, Troy, New York.